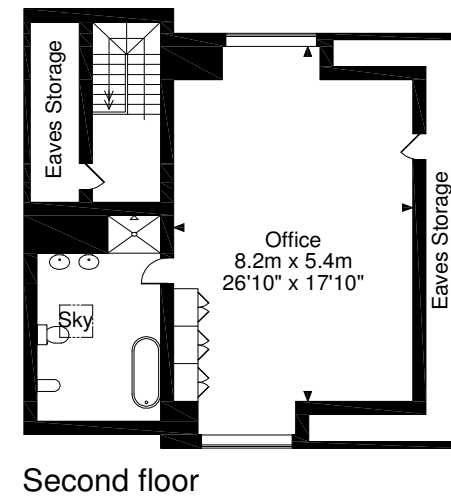
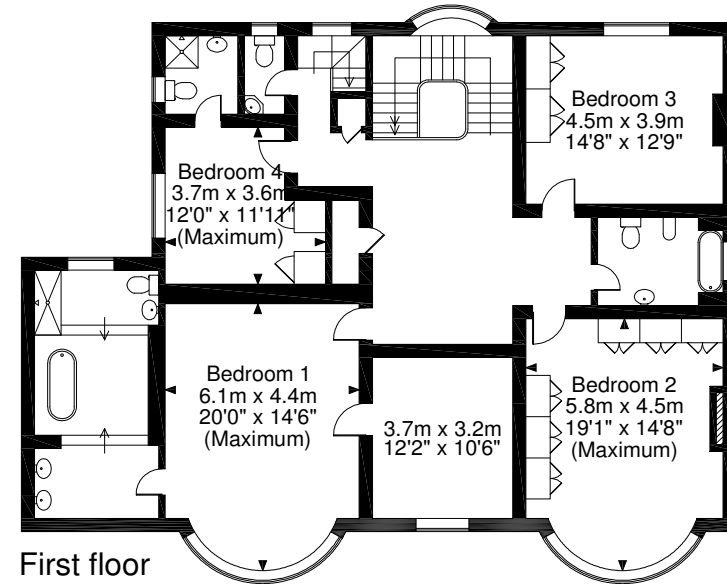
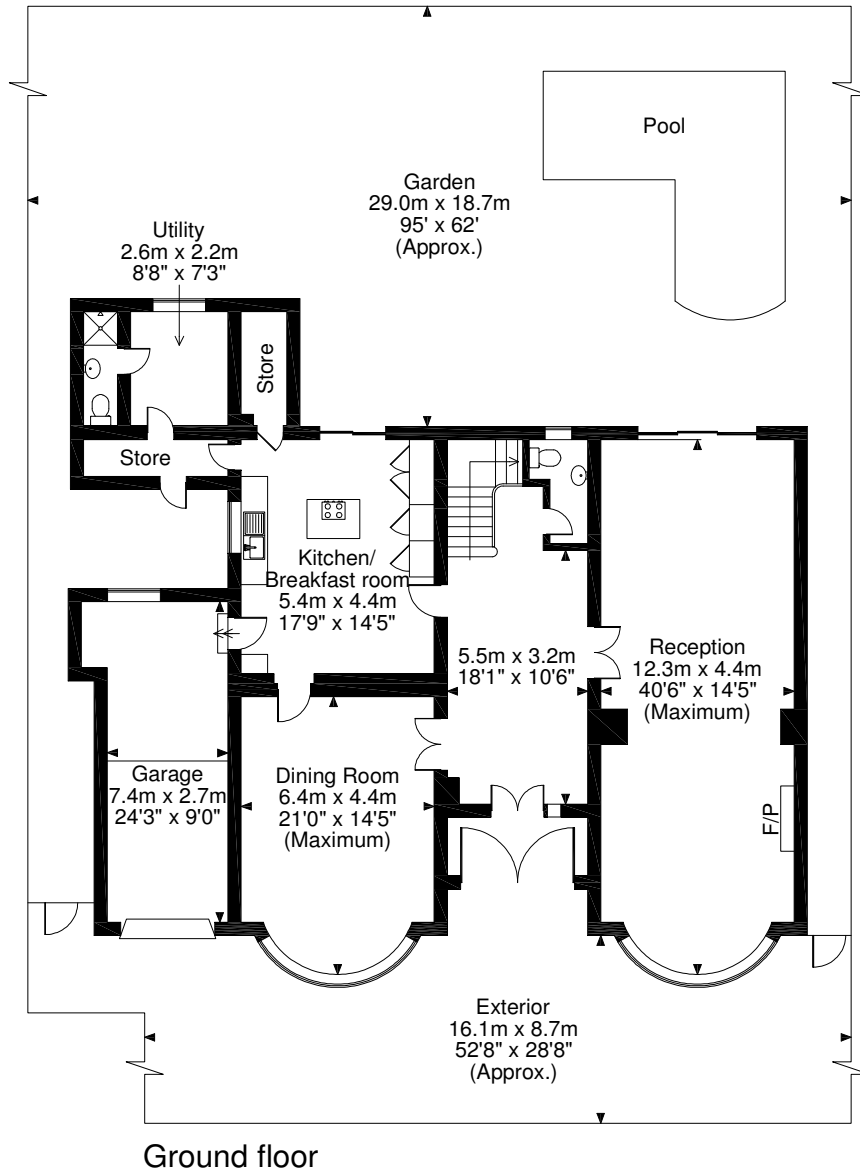
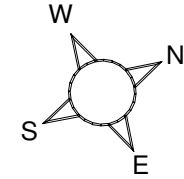


**Brondesbury Park, NW6**  
**Approximate gross internal area**  
**Main House = 387 sq m (4,171 sq ft)**  
**Garage = 21 sq m (228 sq ft)**  
**Total = 408 sq m (4,399 sq ft)**



**FOR ILLUSTRATIVE PURPOSES ONLY - NOT TO SCALE**

The position & size of doors, windows, appliances and other features are approximate only.

© ehouse. Unauthorised reproduction prohibited. Drawing ref. dig/8079112/OHW